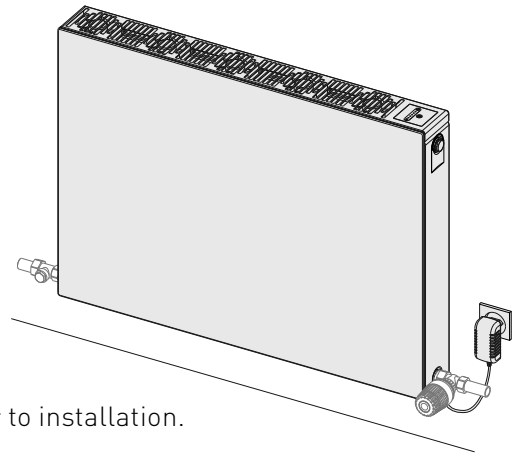


# Faraday Eco Right-in, Left-in Fitting Instructions

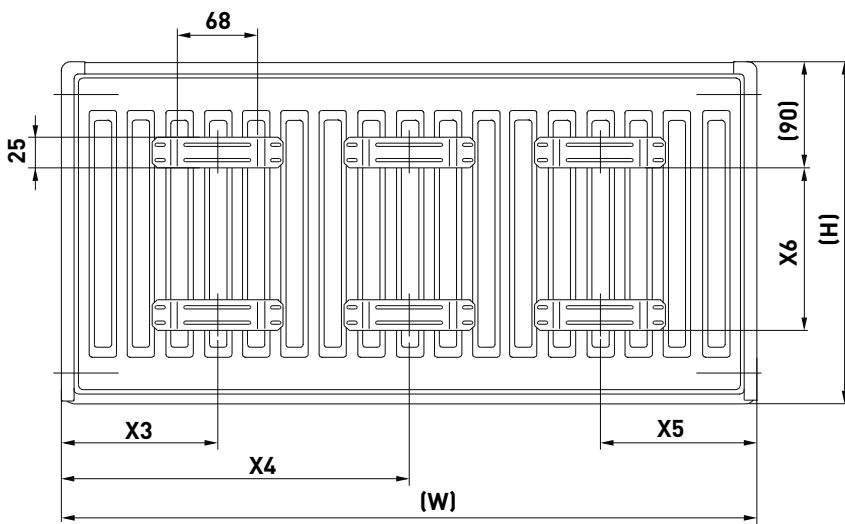
Steel Flat Panel Radiator with fans  
Type 22 (K2)

Please read these instructions and terms and conditions carefully prior to installation.  
Failure to do so may invalidate the warranty.



## Drawings

Fig 1 - Fixing Positions for Brackets



Bracket drawing

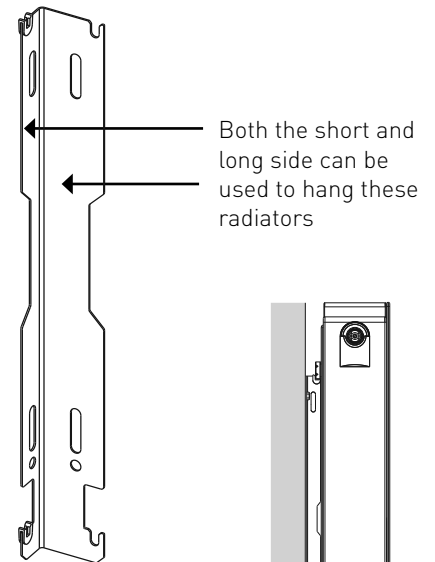


Table of Sizes

Width W (mm)		400	500-1600	1800	2000
X3 / X5	Type 22	133	133	133	133
X4	Type 22	-	-	900	1000

Height H (mm)	600
X6	445

Faraday Eco Right-in



Faraday Eco Left-in



## Pipe Centres

Pipe centres left to right	=	Type 22 (K2) width plus valves
Pipe centres from wall	=	73mm/93mm
Depth from wall	=	125mm/145mm <i>shorter/longer side</i>

# 1. Unpack & Inspect

This product should have reached you in perfect condition. Please carefully unpack and inspect this radiator and all fittings. Your point of purchase must be notified of any shortages or damage within 28 days of delivery. For further information please see terms and conditions on reverse.

## 2. Contents

You should have:

- 2 x L – Brackets (3 for 1800 to 2000 wide)
- 4 x plastic inserts (6 for 1800 to 2000 wide)
- 4 x 6x50 Screw (6 for 1800 to 2000 wide)
- 4 x Washer (6 for 1800 to 2000 wide)
- 4 x wall plug (6 for 1800 to 2000 wide)
- 1 x external mains power supply, plug type G, with 1,2m cord

Cleaning: Steel products can be cleaned using a soft damp cloth with a non-abrasive cleaning product.

You will need:

- Tape measure
- Electric drill and bits
- Spirit level
- Airvent key
- Appropriate wall fixings
- Spanners for airvents / valves

## 3. Installing radiator

1. Position the radiator against the wall in the desired position. Lightly mark either side of the radiator.
2. Mark up position of brackets referring to **Fig 1** for precise measurements. Using a spirit level mark on the vertical lines on bracket positions.
3. Ascertain desired height of radiator and mark. Measure down 112mm from the desired height and mark on vertical line. This will give the position of the top fixing point of the bracket. Offer up bracket to this mark and on the vertical line mark position of lower fixing point. Repeat for other bracket(s) ensuring brackets are straight horizontally.
4. Fix brackets with suitable fixings, fit plastic inserts, hang radiator and fix pipework.

## 4. Commission Radiator

**Please Note: In accordance with Part L1 2006 of the Building Regulations and BS7593:1992 code of practice for the treatment of hot water and central heating systems, we strongly recommend flushing the heating system post installation of new radiators and then adding the correct quantity and type of inhibitor for use with your radiator and system to prevent corrosion. Damage caused to systems not protected by a suitable inhibitor will not be covered by manufacturer's guarantee.**

---

## Technical Specifications

<b>Materials</b>	Steel
<b>Connections</b>	½" flow and return
<b>Test pressure</b>	13 Bar
<b>Testing authority</b>	EN442
<b>Maximum operating pressure</b>	10 Bar
<b>Maximum working temperature</b>	60°C
<b>Packaging</b>	Cardboard box, polyethylene shrinking foil
<b>Appliance protection class</b>	III
<b>Supply voltage for the V-POWER ventilation unit</b>	12 V DC
<b>External mains power supply</b>	230 V AC / 12 V DC / 2 A, protection class II, round plug Ø 5.5 / 2.1 mm
<b>Maximum power input</b>	8 / 28 VA (for 2 / 13 fans and max. fan speed)
<b>Protection - control unit</b>	IP 31
<b>Protection - fans</b>	IP 30

**PLEASE NOTE: Systems using micro bore pipework must have adequate pressure and flow rates for the number and style of radiators on the system.**

## Guarantees & Liabilities

This product is guaranteed for 10 years. All other components, including fans and the control unit, are covered by a 2-year guarantee. As we are not the manufacturers of this product we will take all reasonable endeavours to make over to you the benefit of any warranty or guarantee given by the manufacturer. The guarantees in all cases are subject to the products being installed in accordance with British and or European standards as well as these fitting instructions. The guarantees in all cases are restricted to the free of charge replacement or repair of the failed product only. Our liability will under no circumstances extend beyond the repair or replacement of the product supplied by us. Claims for either labour in replacement or damage to property are not admissible. Any goods that are returned, in the event of a problem, will belong to us.

## Terms & Conditions

All products must be inspected once removed from the packaging and your point of purchase notified within 28 days of delivery of any scratches, blemishes or other damage. Your point of purchase will then agree appropriate action.

Imperfect radiators should therefore not be fitted and we will not accept responsibility for replacement of scratched or damaged radiators once they have been fitted. This includes any consequential loss or cost of fitting.

If we are not notified within 28 days of the date on the signed delivery note then it will be deemed that we have fully complied with our obligations and claims will not be considered. Failure to comply with any of the above may invalidate any claims. We recommend that after you check the product on delivery that it is stored in its packaging to prevent damage prior to installation, we cannot accept responsibility or items damaged after delivery.